

MIGHTY LIFT™

SCALE PALLET TRUCK

Weigh & Move in one step!

SPT50

5,000 lbs Capacity

Equipped with world famous Mettler Toledo scale, **SPT50** can weigh loads on the spot for maximum convenience, efficiency and safety.

Applications:

- Weighing loads on the spot for exact dosing
- Multi-purpose mobile weighing anywhere in plants
- Quick verification of incoming/outgoing freight
- Fast, accurate parts counting for easy inventory control

Benefits:

- Eliminates wasted steps and streamlines operation
- Saves material handling time and reduces labor cost
- Shortens inventory counting time and improves accuracy
- Reduces injuries associated with moving loads or counting heavy parts

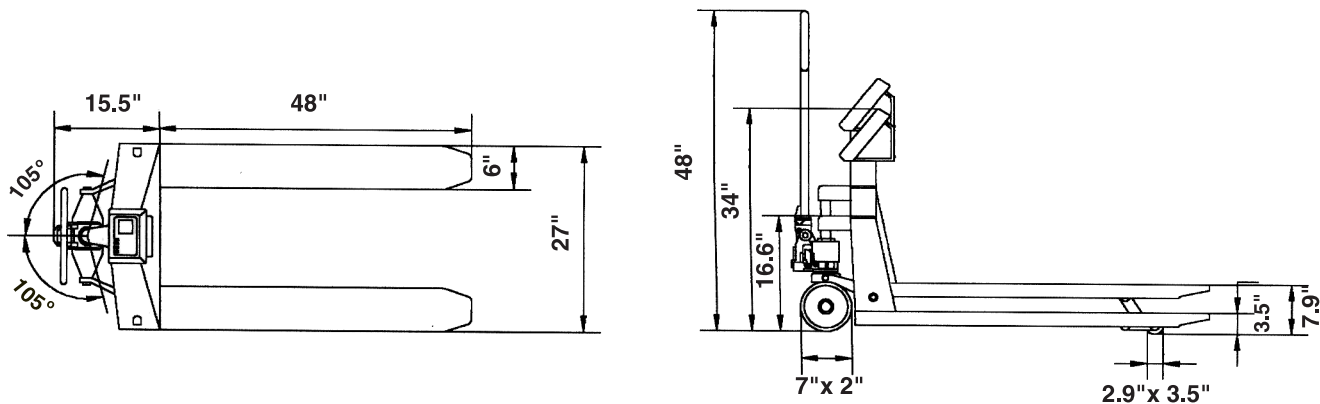


- User friendly scale with 4 easy to operate function keys
- 1" tall high contrast LCD display for easy reading
- Low-cost 6 "D"cell batteries with up to 250 hours operation time
- Low battery indicator & auto shut-off after 5 minutes of non-use
- Keyboard calibration & functional setup w/auto-zero capabilities
- Accurate weigh reading no matter where or how loads are put
- Optional printer available



Scale Pallet Truck Technical Specifications

Capacity	5,000 lbs
Accuracy	+/- 0.1%
Power	Six "D" cell batteries
Battery Life	Up to 250 hrs with six "D" cell batteries
Environment	General purpose, dry
Display	Six-digit, 25mm/1 inch tall, high contrast, LCD
Scale	Analog with four load cells
Keypad	4 color-coded, tactile-feel keys ZERO, TARE, FUNCTION AND PRINT
Operating Temperature	14°F to 104°F (-10°C to 40°C) with 10-95% relative humidity
Storage Temperature	-4°F to 140°F (-20°C to 60°C) with 10-95% relative humidity
Data Output	ASCII via RS-232 Standard
Weighing Units	Pounds and kilograms
Approvals	UL Listed Canada Weights and Measures AM-5318 US Weights and Measures CoC#99-054 US NTEP Certification No. 99-054



Model No.	Cap. (lbs)	Fork Size WxL	Min. Hgt.	Max. Hgt.	Front Wheel Dia. x W	Steering Wheel Dia. x W	Steering arc	WT (lbs)
SPT55	5,000	27" x 48"	3.5"	7.9"	2.9" x 3.5"	7" x 2"	210°	248

Mighty Lift warrants hydraulic unit and frame against defective components or workmanship for 1 year. Wheels, axles, bearings, seals and electronics are warranted for 90 days. Warranty does not cover usage in cold storage, brine, corrosive, or similar applications. Text of warranty is available on request.

www.mightylift.com

Distributed by: